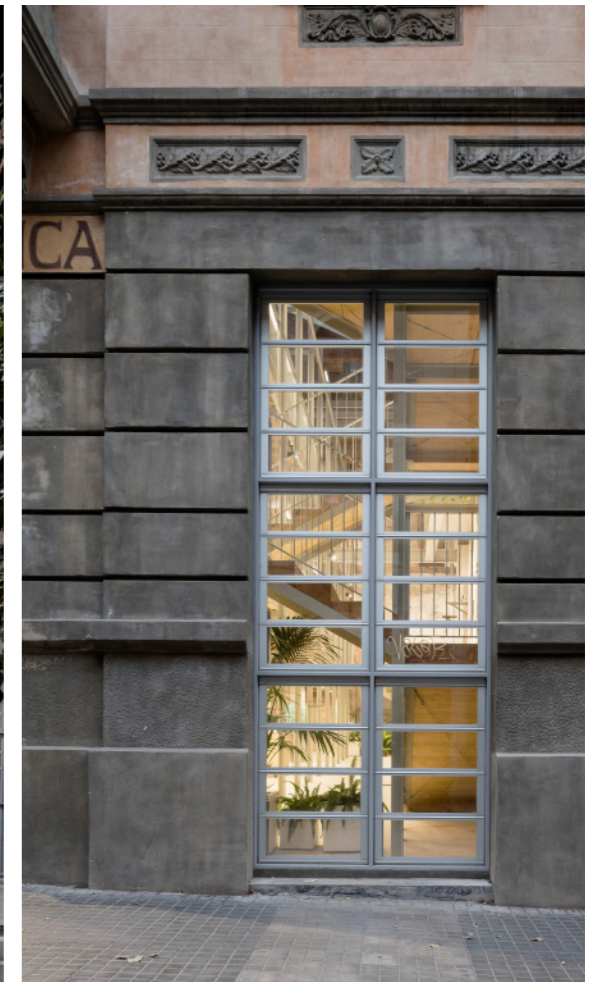


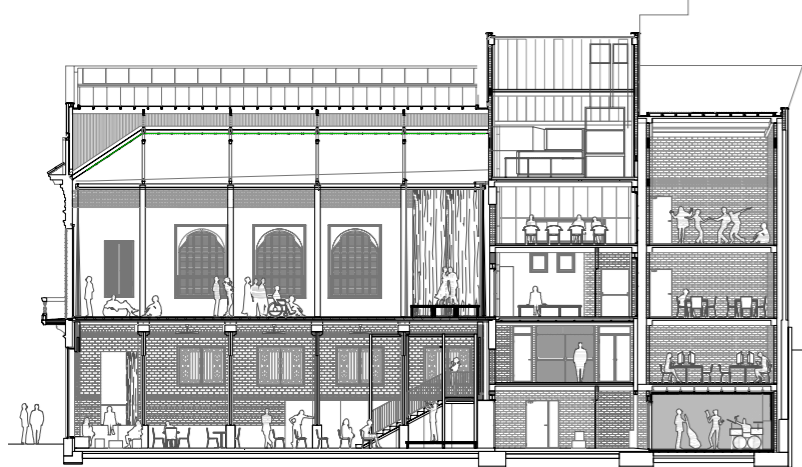
Previous state façade (2012)



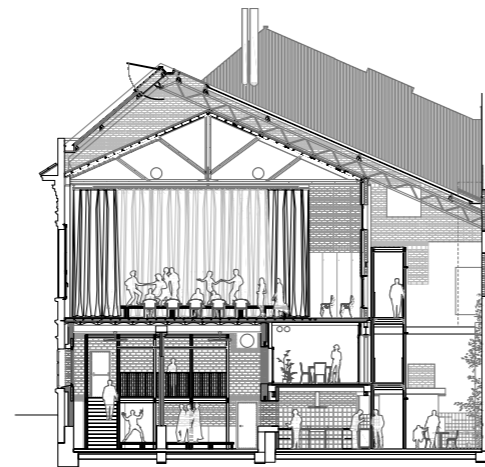
Restored façade (2017)



Long section. Theatre and workshop room



Cross section. Theatre and workshop room



THE (PROTECTED) FAÇADE

We are more interested in the current façade than in the original one. We want to preserve the aged appearance, which reflects the passing of time - the endless range of faded ochre is amazing-. We clean it and repair the existing pathologies but never try to recover the original moment, when the building was released. The trace of time is a value that has to take part of the new Lleialtat's soul, and the façade will be one way of expressing it. On the contrary, what is new is built with contemporary technology (and aesthetics). We keep all the original openings and we add steel carpentries with quartering as a result of the internal needs (ventilation, etc.).

Right image: inauguration of Lleialtat Santsenca in 1928.

