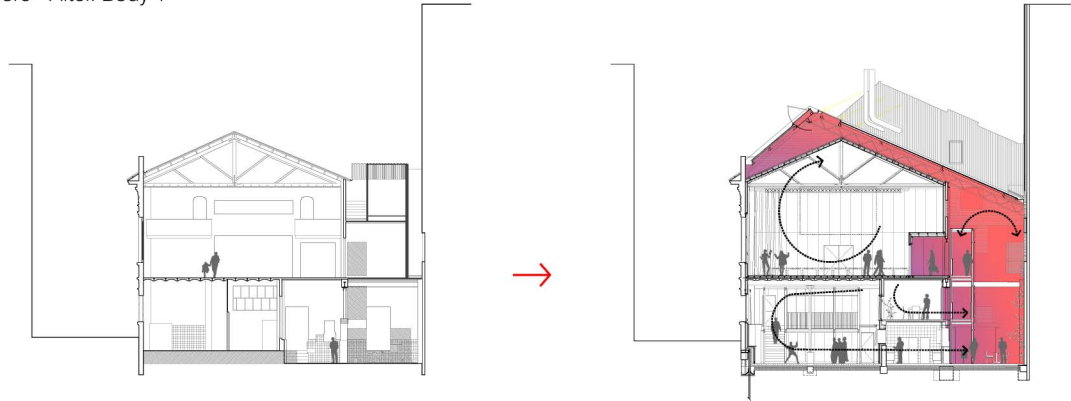
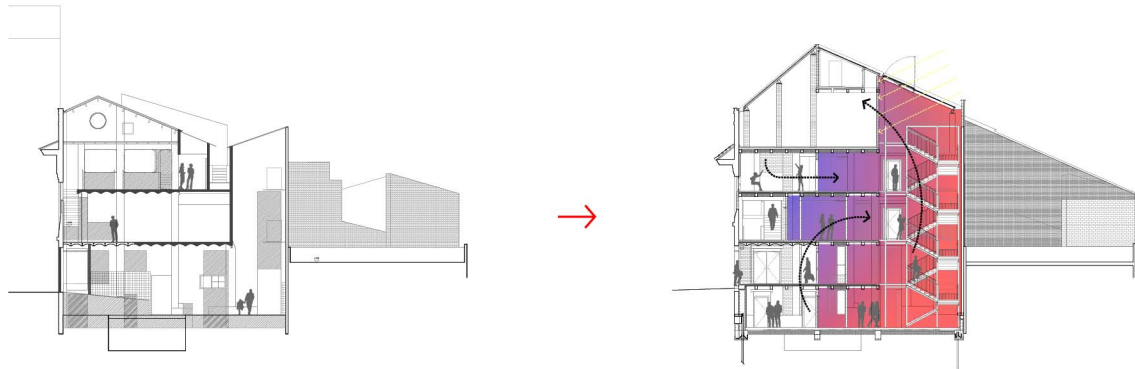


Civic Centre “Lleialtat Santseca” - 4/4
H ARQUITECTES
Category A

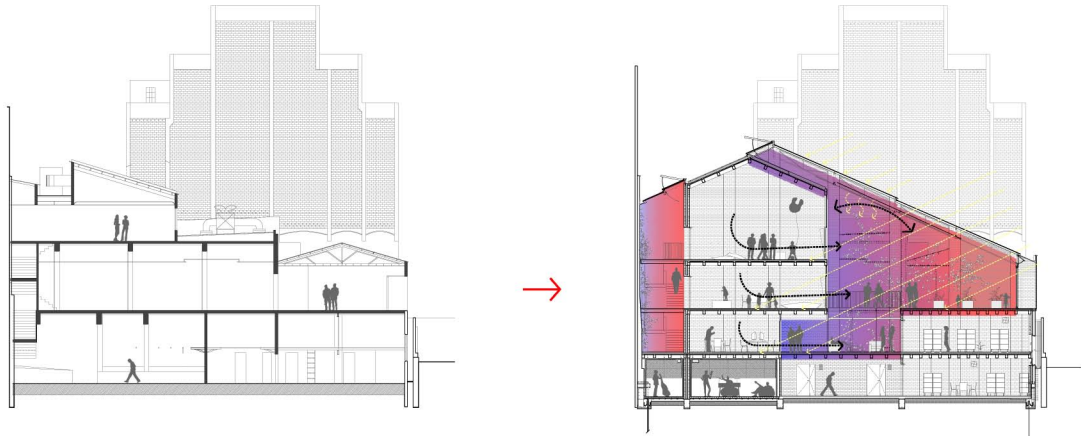
Cross section. Before - After. Body 1



Cross section. Before - After. Body 2



Cross section. Before - After. Body 3



CLIMATE COMFORT

Inspired in Lina Bo Bardi's Teatro Oficina, the Atrium is an intermediate bio-conditioned space that organizes all the circulations through a series of footbridges and stairs that evoke the image of the scaffolding in a construction site. The building functions thermally through passive strategies based on inertia and insulation; three lightweight roofs permit natural lighting and favor ventilation. By increasing the volume of the roofs it is possible to increase solar gain:

in winter heat is collected thanks to a heat recovery system for the interior spaces; in the summer, the air in the top part of the atrium is reheated, forcing a convection which releases the hot air by opening the roof Ridge windows, actioned by automatic sensors. In winter the climate controlled spaces release warm air, tempering the Atrium; in the third body, due to the excess of radiation, a ventilated chamber with a sun filtre optimizes solar caption in winter and summer.

