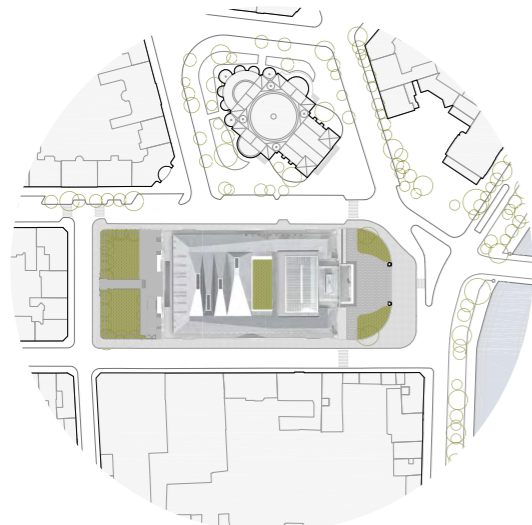


PALACE OF JUSTICE IN STRASBOURG

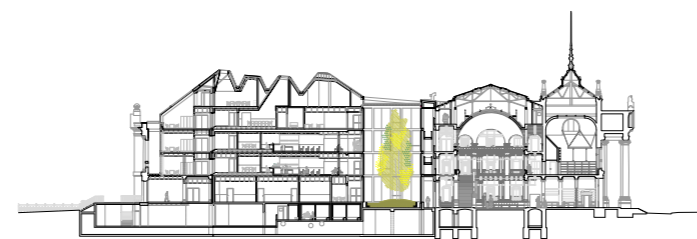
Strasbourg, France



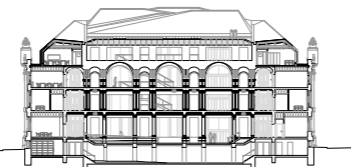
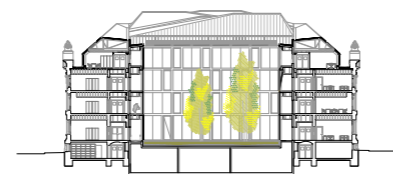
Site



First floor



Longitudinal section



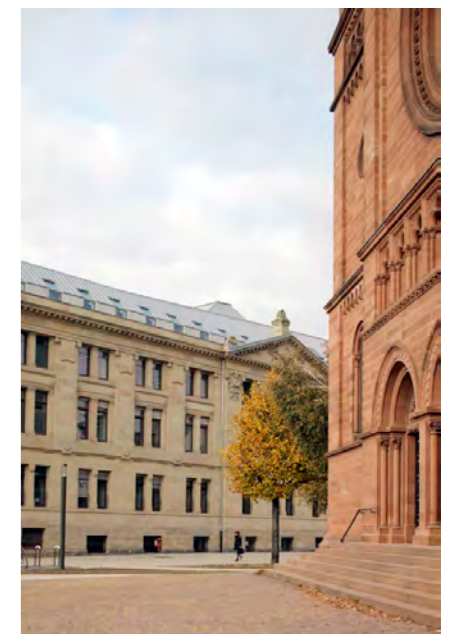
Cross sections

From the Pont de la Fonderie, the Palais de Justice in Strasbourg shows its original appearance, both from a morphological and a historical point of view.

The project is based on three main points: the literal recovery of the neoclassical expression of the façades of the original Palace complex, and the suppression of the upper part made in 1978.

The creation of a new roof system, which houses part of the programme and at the same time covers the entire building. The city is thus enriched with a new urban landmark perceptible from a distance, while the harmonic image fixed in the citizens' collective memory is respected when the building is seen close up. The roofs are a contemporary architectural element, independent of the volume defined by the four façades, which appears with subtlety and discretion in the near view and shows all its power from afar and from a certain height.

The resolution of the current functional order by introducing a new body that occupies part of the old courtyard. The new interior volume contains all the Hearing Chambers.



South facade



East facade



West facade