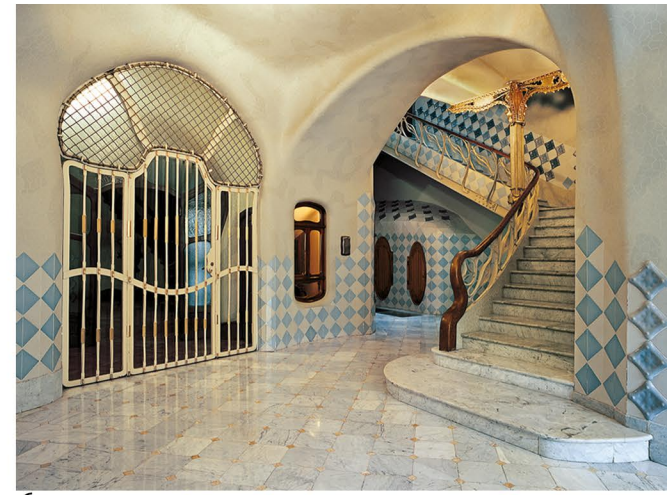
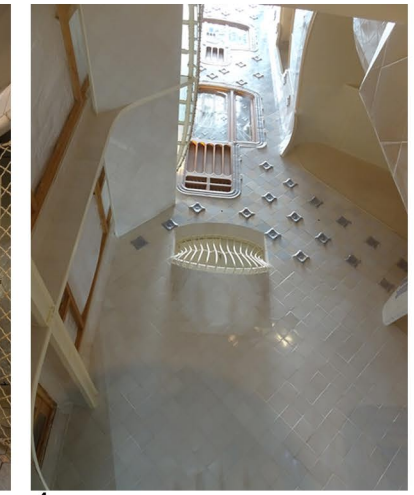
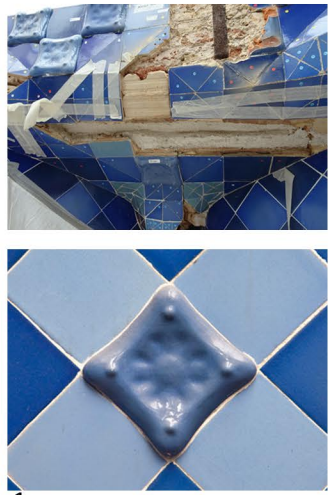


How the building was transformed over the time, a substantial reduction of the potential unity of the composition was caused. There was no question of showing the building in the imperfect state that which had developed over the course of history or the arbitrary refurbishments that had brought it to its present condition. However, taking into account that any intervention could be considered historically false, the restorations and reconstructions needed to be as close to art as possible, so as to preserve not only the building materials as a historical fact, but also the building techniques. The artisanship was a conservation priority, their reproductions and materializations were historical achievements to preserve and continue. The overall intervention of the building involved multiple actions under the general intervention criteria: structural repair in the support area of

the large skylight of the blue patio (1), restoration of the carpentry in the staircase area (3), restoration and elimination of non-original elements in carpentry and stucco consergeria (4), restoration of the ceramics of the blue patio (2-5), restoration of the original pavement of the courtyard. Also a general and specific information campaign was carried out for the visits in order to explain and detail the new developments that were emerging. A series of routes were created in the area all over the building and also on the scaffolding that made it possible to make the restorati on work compatible with the visit. This increased interest in the values of this architectural work: the fact of living the delicacy and care that restoration supposes and seeing the experience of the restoration (5).



1 2 3 4 5 6