



View from the refurbished Sport museum. (Photographs: Tuomas Uusheimo)



Conserved corridor space from the 1930s.



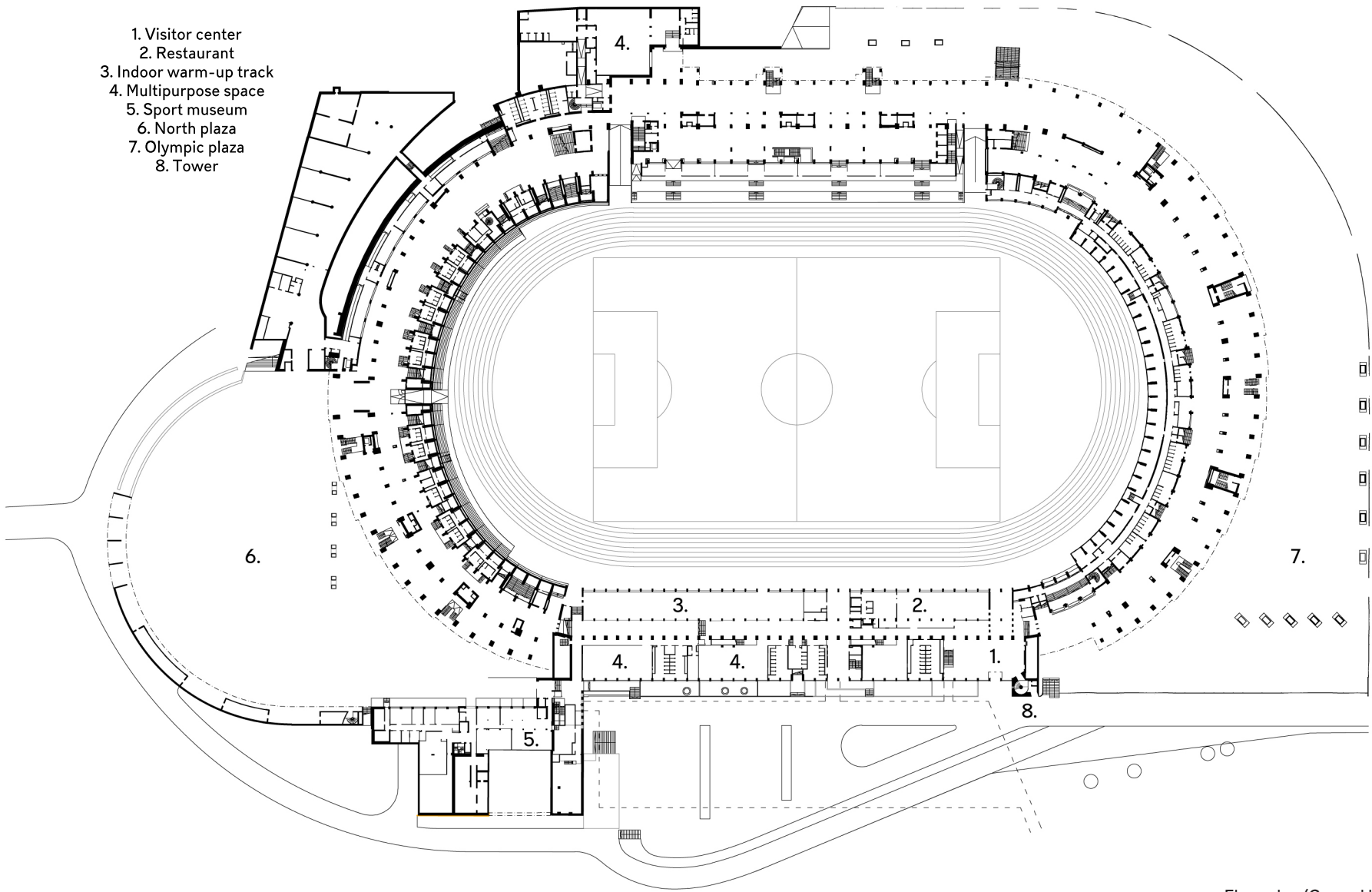
Presidential stairs after refurbishment.



Stairs with painted details conserved. Original materials reinstalled.

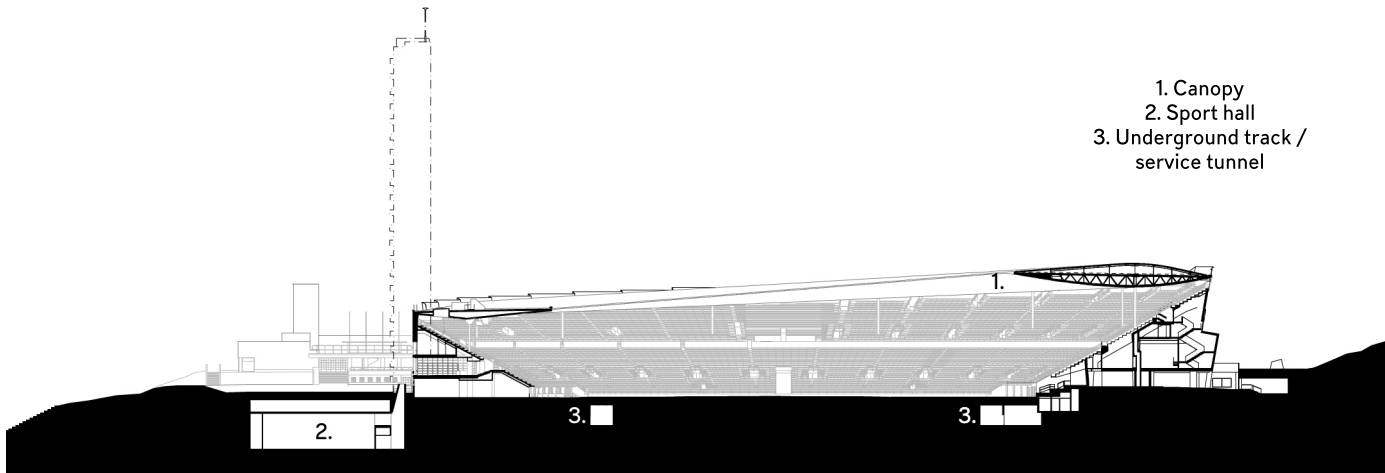


Section 1:1500



Floor plan (Ground level) 1:1500

- 1. Canopy
- 2. Logistic spaces
- 3. Underground track / service tunnel
- 4. Accessible stands



Section 1:1500

- 1. Canopy
- 2. Sport hall
- 3. Underground track / service tunnel