



Photograph of completed Maker Space within the lightwell insert - existing brick arches visible on the left (B1)



Completed Project Space located at basement 2 within the new build lightwell structure

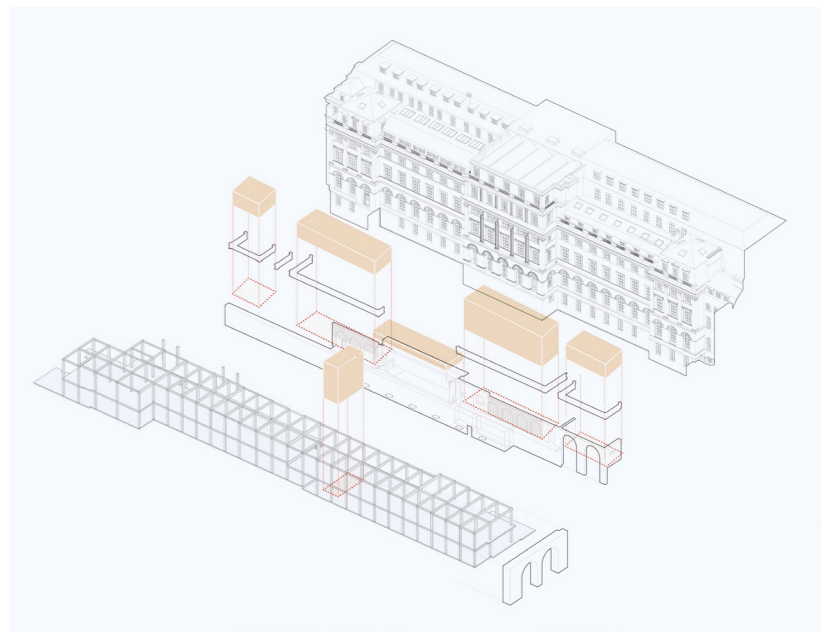
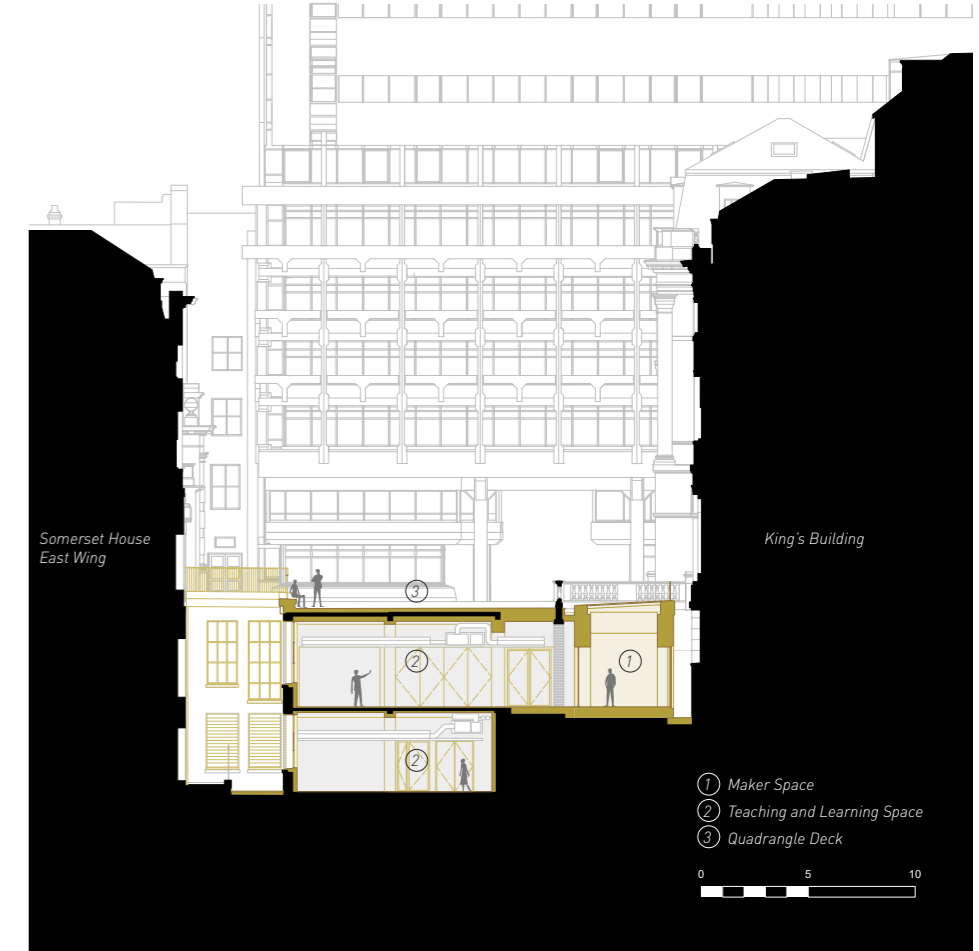


Diagram illustrating the new build lightwell structures and stair within the existing fabric



Completed WC lightwell concrete structure against existing brick wall and arch (B1)



Cross section through teaching and learning space and maker space within north lightwell



During construction - demolition of existing lightwells



Forming the concrete lightwell structures



Image of proposals for maker space within lightwells

The new department occupies space between the surface of The Quadrangle at the level of The Strand, and the Embankment two storeys below. Maker Spaces, A project space and generous WC areas occupy the new volumes in the lightwells between the Quadrangle Building and the King's Building. The New Department is connected to the wider campus of King's in a number of ways, including a new shared learning commons space located in an existing series of vaults below the central King's building entrance. Staff and student feedback from the School of Engineering, as well as that from College Board level have been very appreciative of the project, and its transformational impact upon the founding campus.



Existing Cross Section