

Quadrangle Building, King's College London

Hall McKnight

Category A - Built Heritage - 06A001196

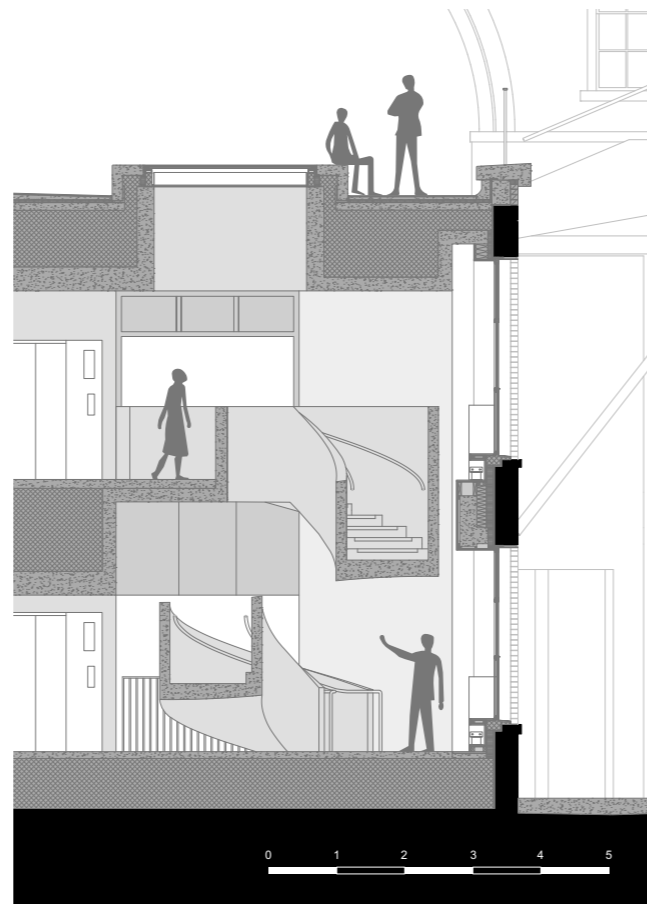
The concrete helical stair and lift core provide connections and the oculus, which is visible on the Quadrangle deck, brings light into the centre of the plan. The undergraduate learning and teaching spaces are designed for collaboration and interaction. The direct relationship to the new maker spaces and workshops ensure that the course content is rooted in a connection with making and physical things. Students are immersed in an educational environment where theory, learning, collaboration, practical experimentation and making are practiced within a highly accessible and open environment at the heart of the campus.



Learning commons within King's Building Vaults [B1]



Existing King's Building Vaults archive



Detail section through helical accommodation stair



© Johan Dehlin

Base of helical stair with connecting views between teaching & learning spaces



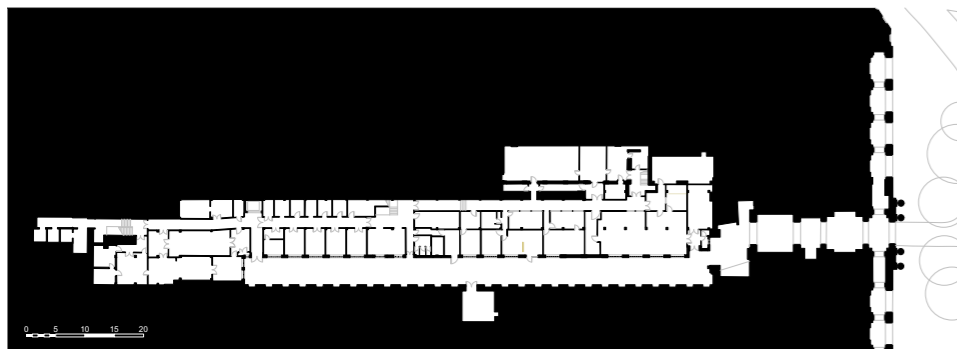
© Johan Dehlin

Helical accommodation stair lit from above by oculus rooflight [B1]

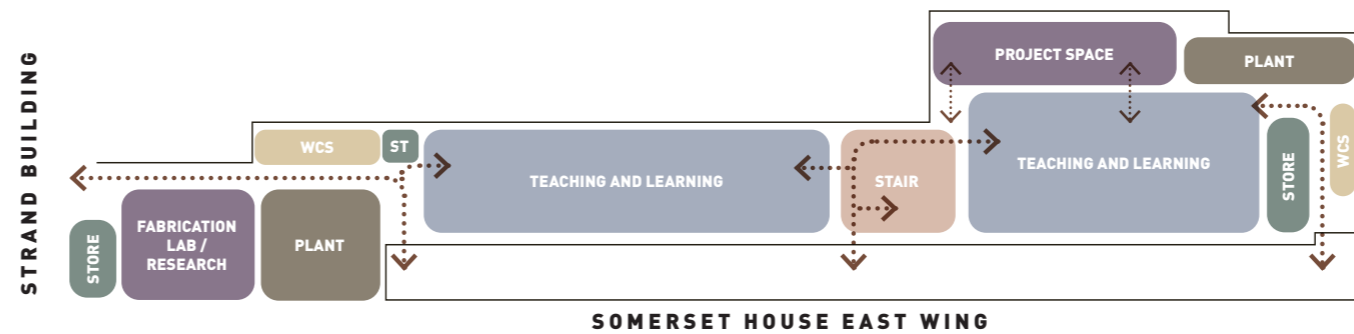


© Johan Dehlin

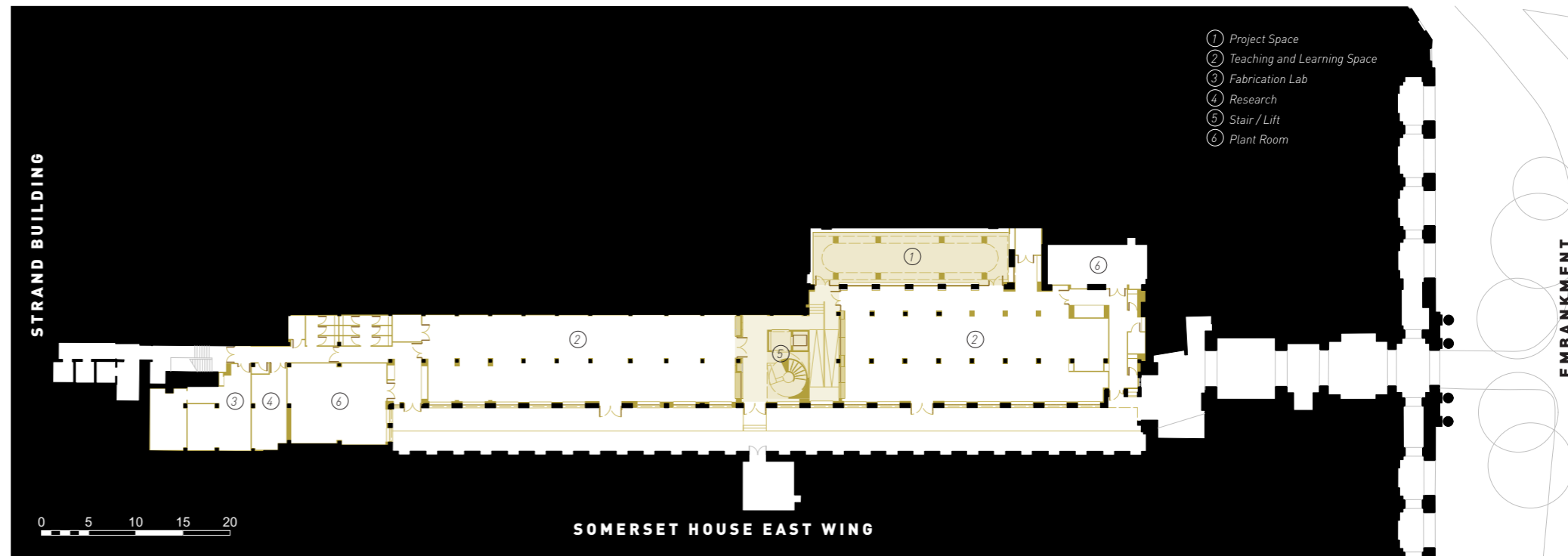
Quadrangle learning commons connecting King's Building to the Quadrangle Building [B1]



Existing Basement 2 Floor Plan



Diagrammatic layout of Basement 2



Proposed Basement 2 Floor Plan

More specialist research spaces and a fabrication lab are located to the North end of the building with connections for fume hood extract into the main riser on the top of the Strand Building.

The layout and robust finishes are designed to provide day to day and long term flexibility and adaptability to changes in teaching methods.