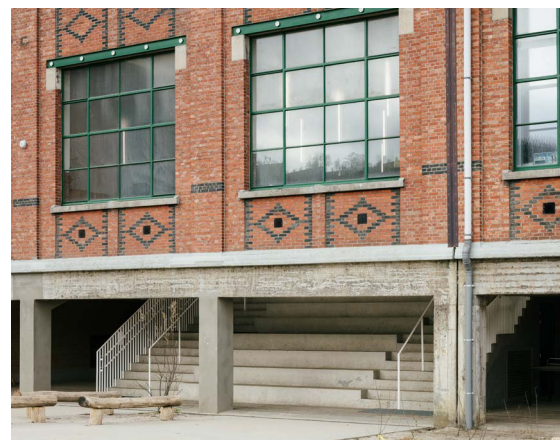


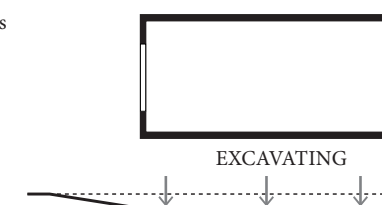
Axonometry of the building with the new functional infill



New situation exterior



School building with adventure playground and kindergarten classrooms on the ground floor



Previous state exterior



The Straß! School combines kindergarten and primary school and is housed in the former bathing halls of the Beringen coal mine. This is one of the largest and best-preserved mining sites of Europe. For the major part, the mine is repurposed for cultural, recreational, and commercial programs, targeting a supra-regional audience. This project adds a primary school, a function that is embedded in the social, cultural, and educational fabric of the local community. The project brings children and parents into contact with the historical heritage.

Safeguarding the expression of the existing building was prioritized. The design capitalizes on the generous dimensions of mining heritage by organizing a stimulating learning inside and outside the building. New facades are made in wood and glass; they are clearly distinguished from the historical structure.

On the ground floor, the kindergarten is housed. An existing overhang protects the terrace and creates a protected outdoor space. The young children can step onto the playground easily. The primary school is situated on the first floor. A large staircase – the most prominent design intervention – connects the school to the playground and can be used as a theater.