

GAVÀ UNIÓ DE COOPERADORS REHABILITATION

J. L. SERT - J. TORRES CLAVÉ
(1936)

MERITXELL INARAJA I GENÍS, arquitecta

Category A - 06A001245 - March 2023

Objectiu temàtic 6: Contribuir a la conservació del medi ambient i el patrimoni cultural

As for the original carpentries that were preserved, only one first floor element, it was chosen to restore them and not to manipulate them even though they did not offer the insulation conditions that are currently required. And the rest of the lost carpentries, once recovered the plan in which they were originally located, have been treated as new closures simple referents of the lost originals.

Once all the values of the building have been recovered, taking advantage of the fact that the rear bay originally intended for service spaces had been very altered -new slabs and divisions-, this part is emptied to create a double space and a new scale that allows the visual and functional relationship of all the floors of the building and the performance of the fire and evacuation regulations of compulsory compliance. This intervention allows to give light to the basement and provide it with new activity and open it to the rear courtyard.

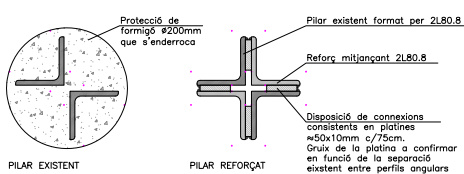
Although the original openings of this façade are unknown, references are taken from the plans to place square windows characteristic of many of J. L. Sert's works according to the new use of the building.

In addition to the architectural and urban recovery by the city of a building that was innovative at the time and is still a sign of modernity, also with the use that has been given to it, a collective space for entrepreneurship, the use for which it was conceived has been recovered and updated.

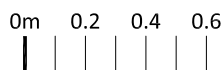
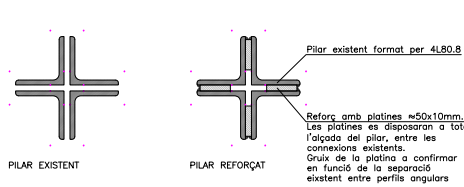
STRUCTURAL DETAILS (REINFORCEMENT)

REFORÇ DELS PILARS

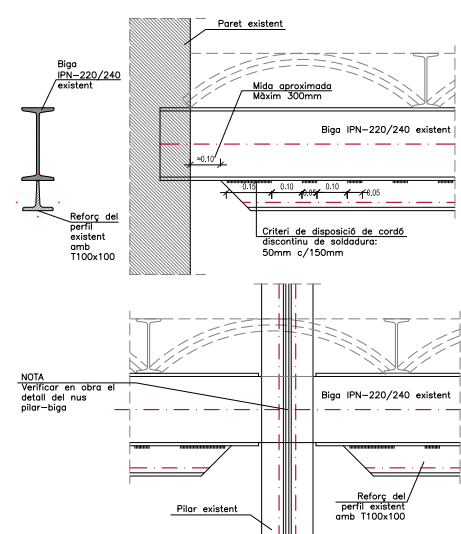
DETALL PILAR PLANTA PRIMERA



DETALL PILAR PLANTA BAIXA



REFORÇ DE LES BIGUES



BASEMENT FLOOR



DURING INTERVENTION



NEW STAIRCASE



BACKYARD