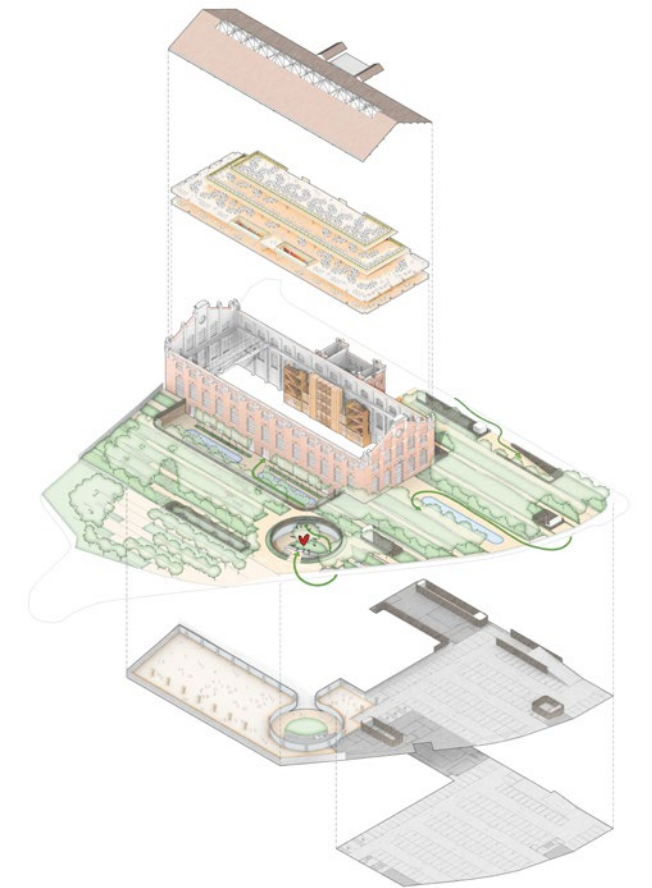




**Project name:** Ombu  
**Architect:** Foster + Partners  
**Category:** A, (Built Heritage)  
**Registration code:** 06A001394



One of the most sustainable projects by Foster + Partners, the project was presented at COP26 in Glasgow as a case study for the World Green Building Council. Its environmental impact is compatible with the original 2°C aim of the Paris Agreement and its carbon footprint has been carefully measured and controlled. The design reduces embodied carbon by 25 percent when compared to a new build over the whole life of the project, while making allowances for future refurbishment. The operational energy is calculated to be 35 percent below normal expectations.

Using the concept of ecological footprint, the life cycle impact of the project was quantified and improved across all aspects of the development. When contextualised in terms of planets the result was approximately equal to 1. This means Ombú's carbon emissions will be absorbed by the capacity of the earth, achieving the balance of sources and sinks required by the Paris Agreement.