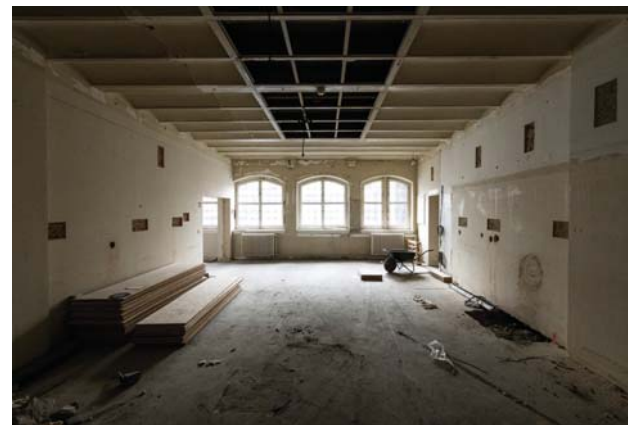




The interior polychromy of the Council Chamber was fully restored and reconstructed based on an extended colour research.

Images above © Jeroen Verrecht  
Images beneath ©Stijn Bollaert



View on the second floor during the works and after the works. This floor, previously serving as a city archive had been dismantled before the project so didn't contain any historical finishing anymore. The floor is situated behind the gallery of the façade and by consequence lower and darker. The new vestibules (picture below) are double high spaces and bring bright light into this second floor. This gives this floor the 'allure' and representivity that it needed for the cabinets that were located on this floor in the new program.

Images above ©Kioni Papadopoulos  
Images beneath ©Stijn Bollaert

