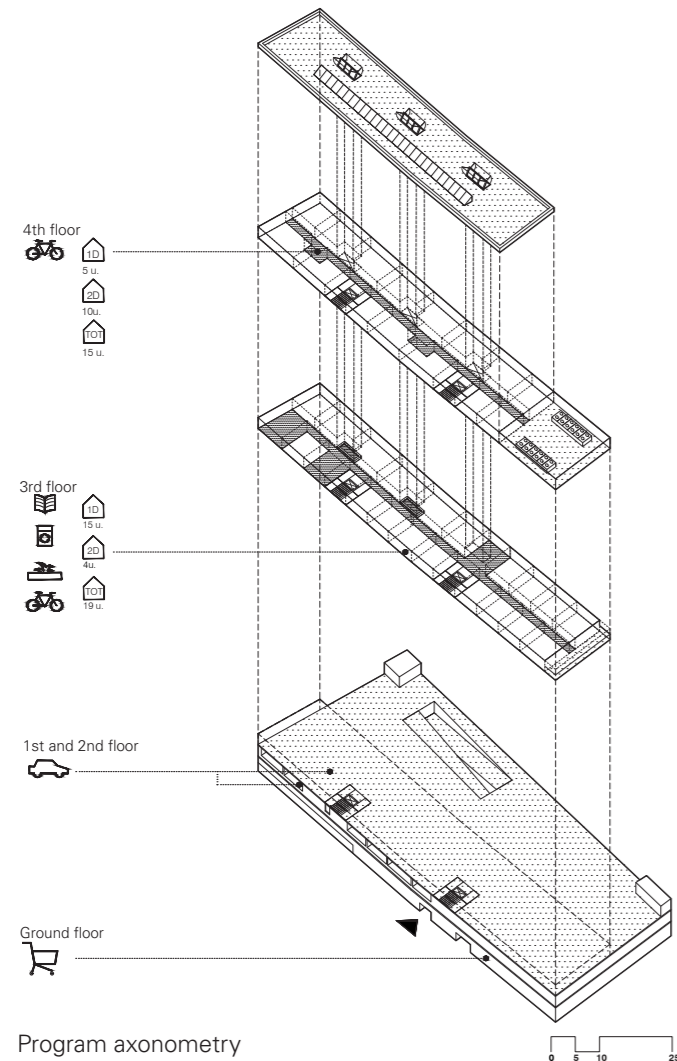


Authors: MIM-A (Mariona Benedito + Martí Sanz)

Category: Patrimonio construido

Inscription code: 06A001436



Program requirements, community spaces

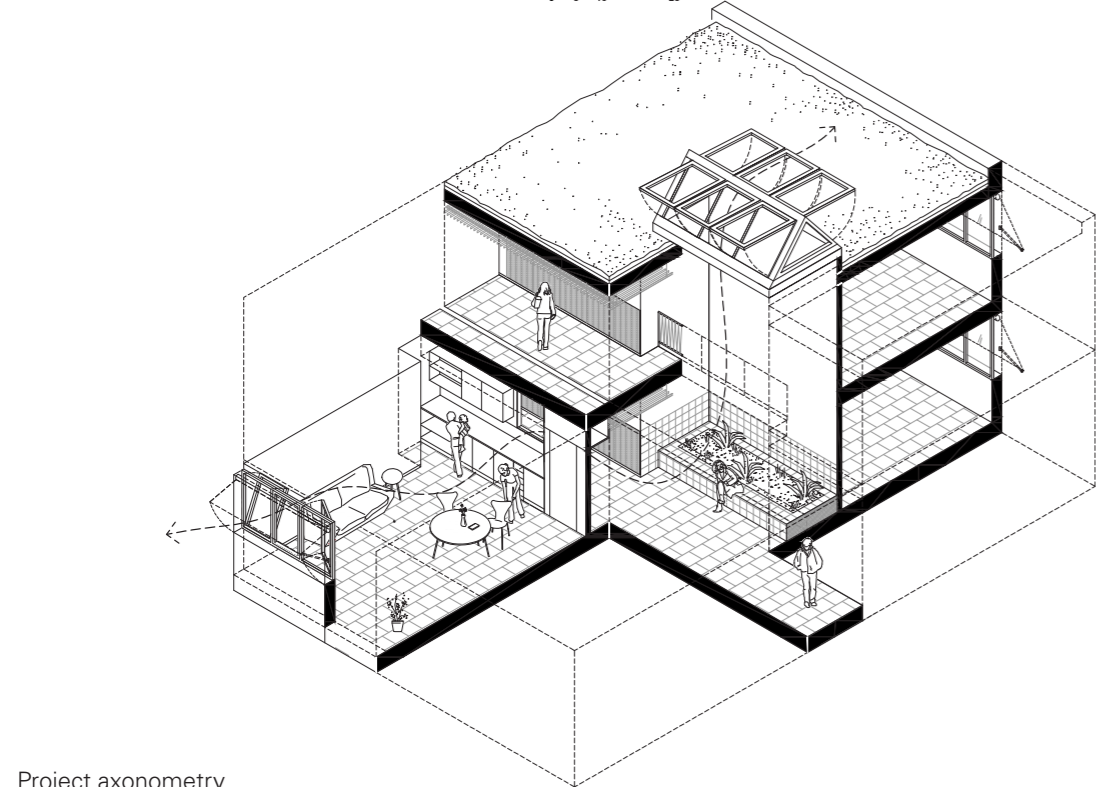
Given the dimensions of the space, the orientation, and the views, the project arranges the 34 endowment housing units for rent (20 1D + 14 2D) on both sides of central corridors, to which a series of strategies are applied so that the traffic between the street and the private space has the best environmental qualities and they also become living, relationship, and coexistence spaces.

First of all, three voids are made that reach the roof and get natural light, spatially relate the two floors, and allow cross ventilation of all the homes. The voids become benches or planters on the lower floor, a balcony on the upper floor, and a skylight on the roof.

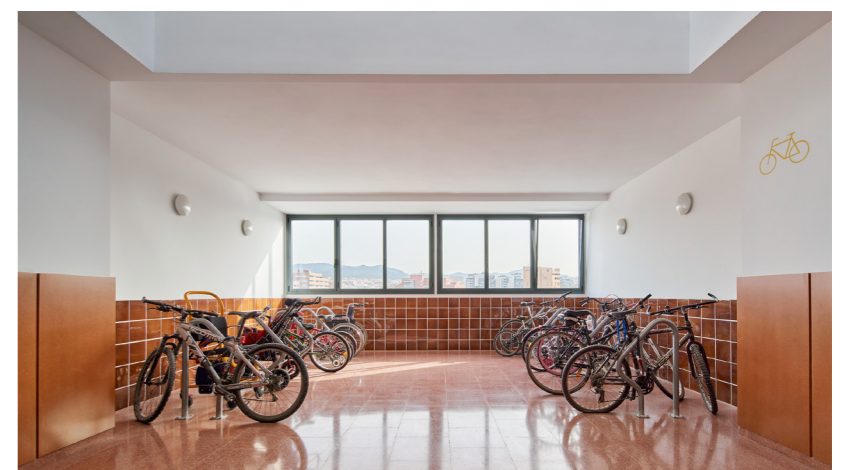
Secondly, the project places the common spaces strategically and alternately to expand the central corridors. As soon as you leave the lift, there is a bicycle parking lot that will be used both by the village and by the number of paths that exist in the fluvial park.

Further inside and in front of one of the planters, there is a laundry with ventilated drying racks that resolve the management of the community's clothes and the impossibility of creating outdoor spaces given the existing facade.

Finally, at one end is a multi-purpose room that can be a play area, a meeting room, a party room, a study room, a work room, or whatever its inhabitants wish. Finally, in front of each of the access points to the homes, there are widenings that widen the corridor and that connect it with the homes and their exteriors through windows.



Community spaces



Program axonometry

Project axonometry