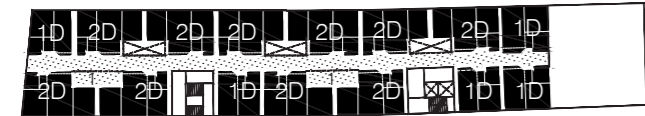


Authors: MIM-A (Mariona Benedito + Martí Sanz)

Category: Patrimonio construido

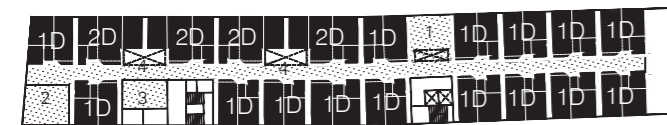
Inscription code: 06A001436



4th floor: 15 units

1D dwellings: 5 units
2D dwellings: 10 units

Common spaces:
1. Bicycle parking



3rd floor: 19 units

1D dwellings: 15 units
2D dwellings: 4 units

Common spaces:
1. Bicycle parking
2. Reading area
3. Laundry room
4. Hall common space



Aggregation

The 1D dwellings take up the width of the existing structural crugia (6.5 m), and the 2D dwellings take up a crugia and a half so that they are always on their side, and at the same time, they leave a free space, which is what allows the voids on the side of the central corridors. The aggregation is simple, and the placement of the 1D, 2D dwellings and the common spaces seeks to make the rhythm of light entrances in the central corridor uniform and equidistant.

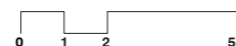
Typology

The 1D dwellings, 6.5m. in width, are arranged in two halves perpendicular to the facade: one, diaphanous and open, which occupies the living room, kitchen, and dining room and seeks to enhance cross ventilation and the relationship with the common space; and a second, closed and compartmentalized, which houses the access space, the wardrobes, the toilet, and the bedroom, and which seeks privacy and order. The kitchen is placed parallel to the corridor, which, beyond concentrating the facilities, frees up the maximum space for the dining room and, being completely open, eliminates any gender roles. It is worth noting the tilting window in the kitchen, which is a very important element of the proposal since thanks to it cross ventilation is achieved, lighting the corridors, and allows the inhabitants, if they wish, to establish relations with the community.

To seek maximum seriation and avoid corridors, the 2D dwellings are exactly the same as the 1D ones, incorporating the second bedroom on the other side of the living room.



Aggregation of typologies



Interior spaces

