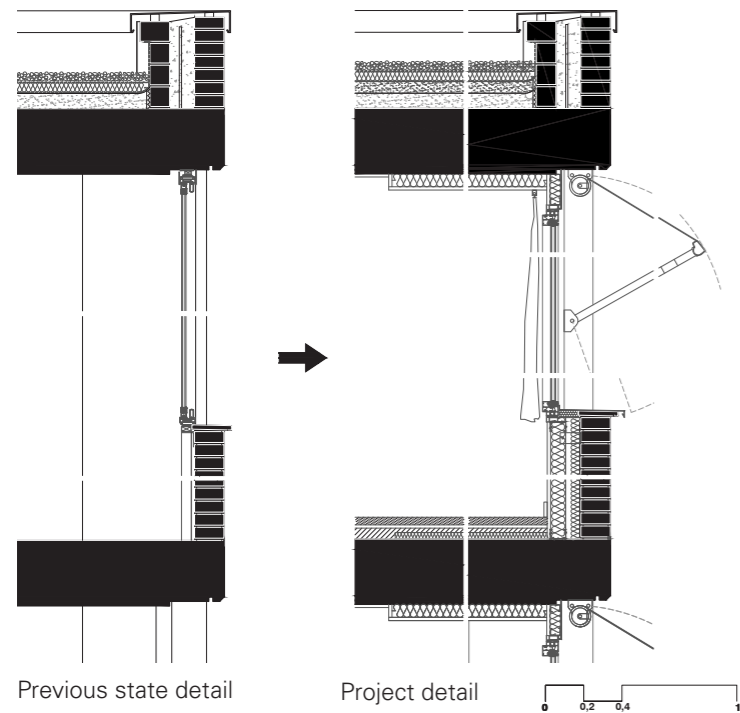


Authors: MIM-A ( Mariona Benedito + Martí Sanz )

Category: Patrimonio construido

Inscription code: 06A001436



Previous state detail

Project detail

**Social, constructive and technological innovation**

The project is an urban recycling operation, the sum of the efforts of IMPSOL.AMB and Sant Feliu de Llobregat City Council to modify the plan of an office building and transform it into subsidized housing.

The fact that a municipality can reactivate an obsolete building to add social housing is a paradigm of sustainability. This development is completely for rent, and the housing, with an endowment scheme, responds to the municipality's housing emergency demand.

**Energy strategy**

The proposal bases the energy strategy on basically passive measures:

The insulation of the facades, roof, and flooring of the third floor or the breaking of the thermal bridges that the original structure had.

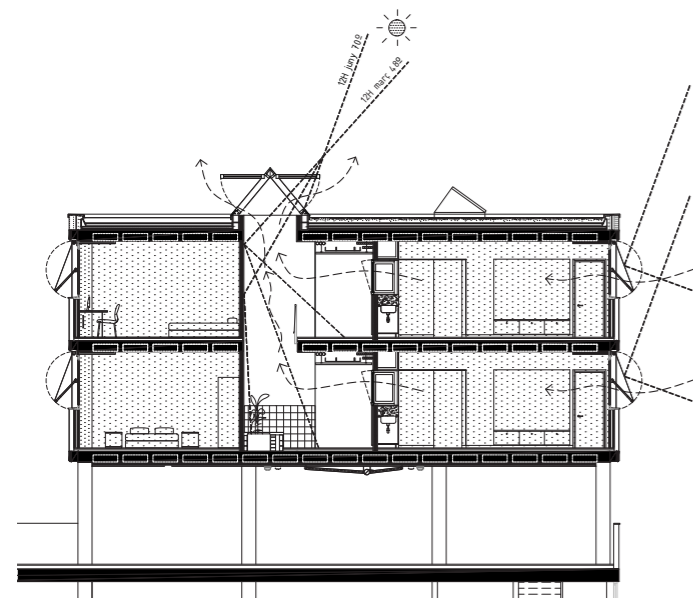
The improvement of the services of the carpentry, providing them with solar protection on the inside through curtains and on the outside with articulated awnings.

The promotion of natural cross ventilation, favored by practicable skylights and windows at the ends of the corridors, is programmed through an environmental comfort sensor.

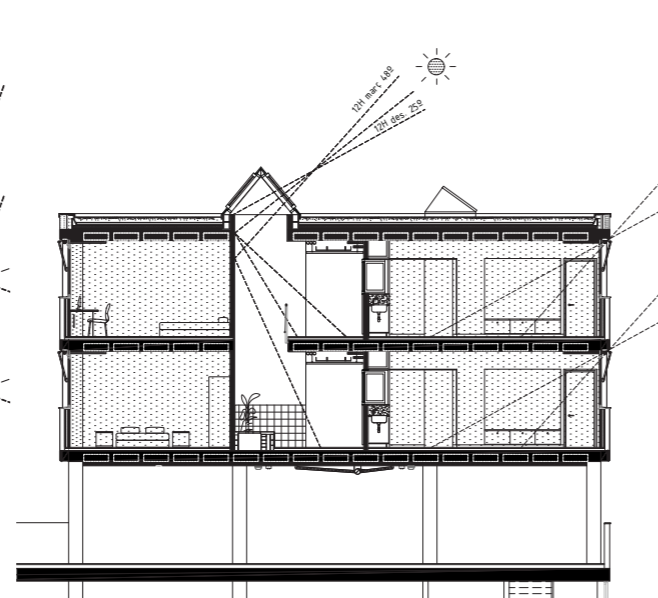
As active measures, the use of aerothermia, the placement of photovoltaic panels on the roof, and the arrangement of temperature sensors in the skylights that allow their opening and/or closing depending on the external conditions are proposed.

CONSUMO DE ENERGÍA PRIMARIA NO RENOVABLE (kWh/m <sup>2</sup> -año)	EMISIONES DE DIÓXIDO DE CARBONO (kgCO <sub>2</sub> /m <sup>2</sup> -año)
<26.80 A	<6.10 A
26.80-43.4 B	6.10-9.90 B
43.40-67.30 C	9.90-15.30 C
67.30-103.50 D	15.30-23.50 D
103.50-212.90 E	23.50-49.00 E
212.90-240.50 F	49.00-57.30 F
>=240.50 G	>=57.30 G

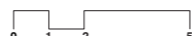
Energy certification



Summer climatic section



Winter climatic section



Ventilation and energetic solutions

