



The new Prodis headquarters is located in old industrial buildings originally belonging to the Vapor Marqués. The buildings are made up of the traditional structure of ceramic brick load-bearing walls with a rhythm of pilasters and openings every 3 meters. The 12-meter span is covered by wooden trusses -some quite damaged- and a roof with a traditional structure of wooden straps and slats

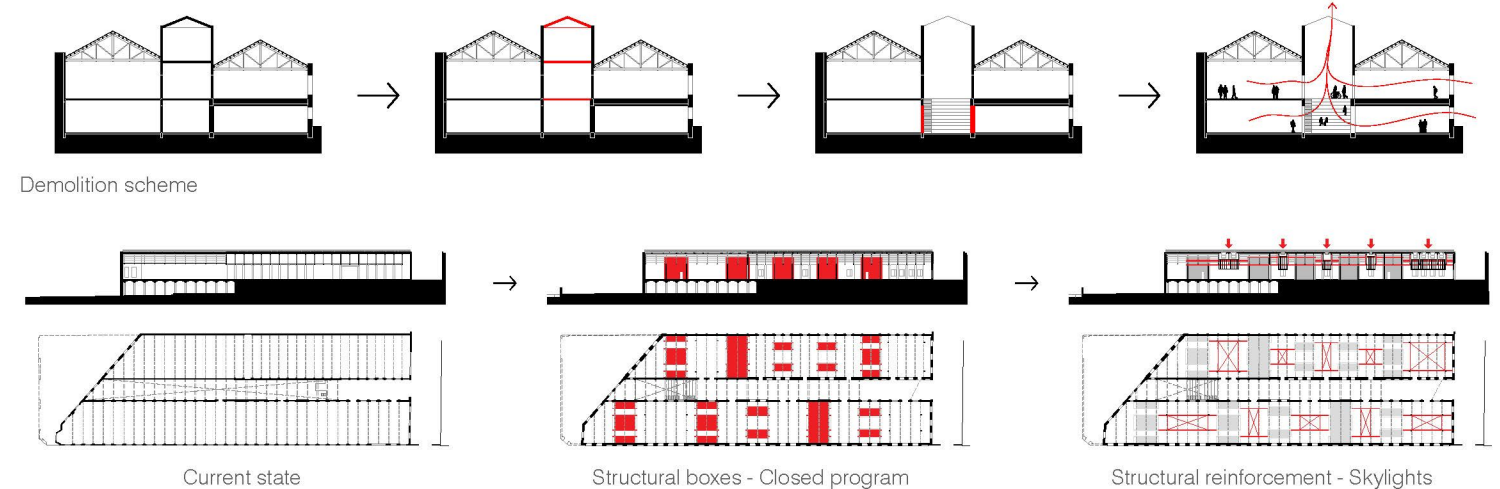
The main value of the complex lies in its urban structure (building-street-building), its archetypal condition as an industrial building and the imperfection resulting from the history of its transformations.

For a few years now, the Prodis foundation has been initiating a transformation of its conception of how to work with its users. A progressive opening of its centers towards more empathetic functions, where the work of the users has a more emotional reward and their contribution

takes on more meaning. The project attempts to gather these concerns and give them shape in the organization of the spaces and in the relationship with the city.

The first strategy is the recovery of the central street between the two warehouses. We propose a kind of passage that will become another street in the city from where all the circulations and activities of the center are organized. The public condition of the passage generates a much more direct and open relationship between users and citizens.

Along the two main (and original) warehouses, the different spaces of the center are organized, accessed directly from the interior street but at the same time interconnected internally. These are activities that combine main uses (workshops, training classrooms, kitchen or dining rooms) with more complementary spaces (bathrooms, meeting rooms or storage).



Current State - South Building



Current State - Central Building



Original State, 1963. Carles Duran i Torrens Collection



Current State - Central Passage



Truss detail and roof elements