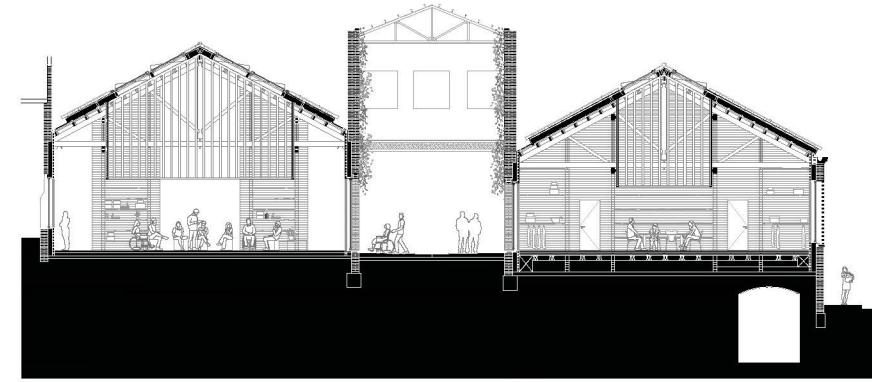
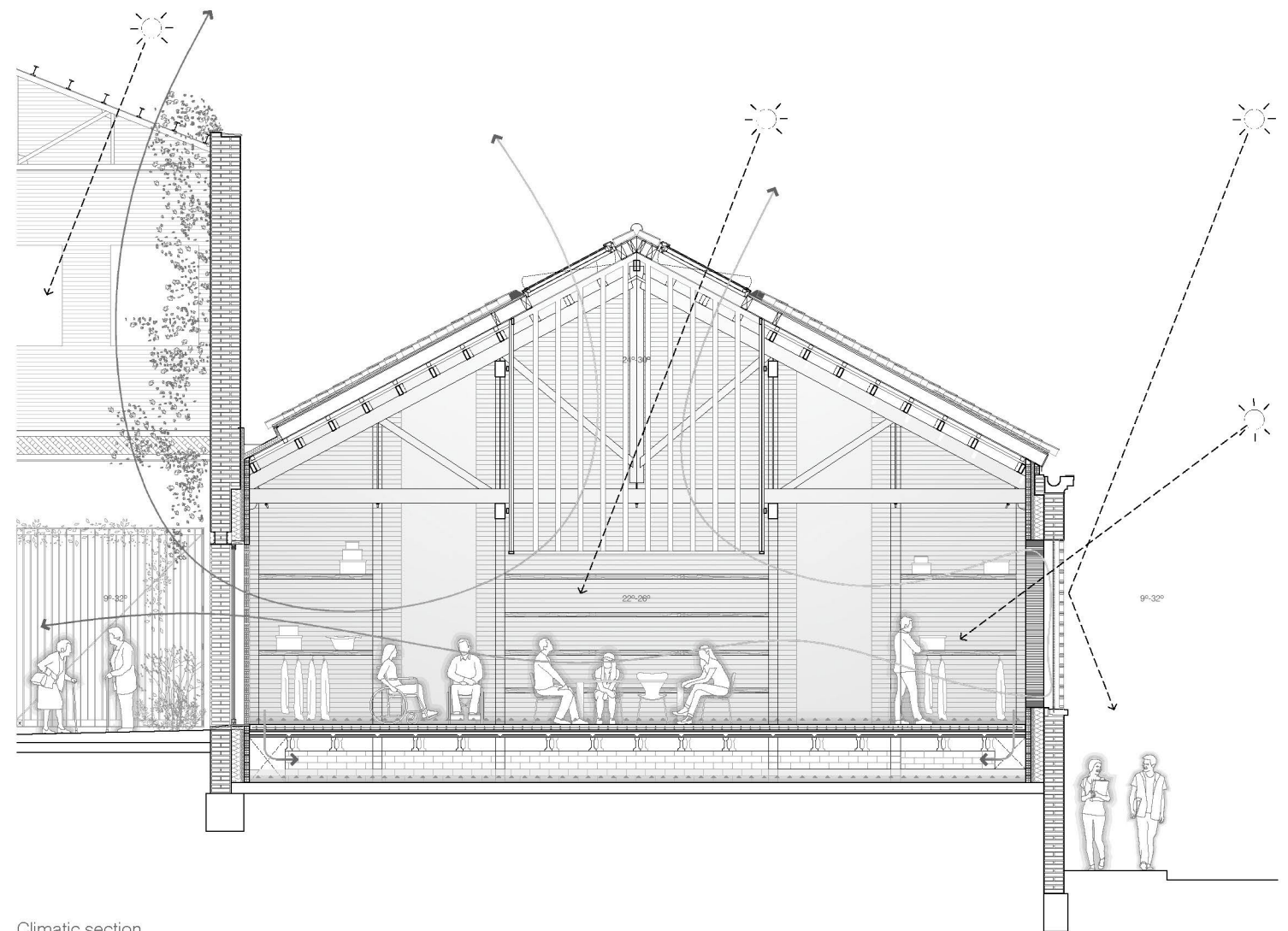


Cross section 1



Cross section 2



Climatic section

The need to subdivide spaces within an enormous space and at the same time the need to reinforce the existing trusses allows an organization of the spaces and their hierarchies based on these structural reinforcements. New transversal beams to the existing trusses reduce their light and allow them to be preserved. These new superimposed structural orders also help us to locate the more closed programs and at the same time central skylights in each main space that qualify and characterize them.

A sequence of linked spaces is created that allows us to understand the large dimension of the naves, but at the same time they manage to create more domestic corners and spaces within a whole. The light and the structure establish an intense link with the environment and transport us to a more emotional situation.

On the outside, the original holes that had been disfigured are recovered, recovering the full-empty relationship but at the same time an attempt is made to preserve the character of the micro transformations that the building has undergone. In this sense, we propose to remove all the cladding to rediscover the structural transformations that explain the changes and stages of the building. It is in the structure where we find its genetics and its transhistorical condition.

A building that will live half inside and half in the passage where the natural condition of the climate will also be part of this new opening of the institution to the outside.