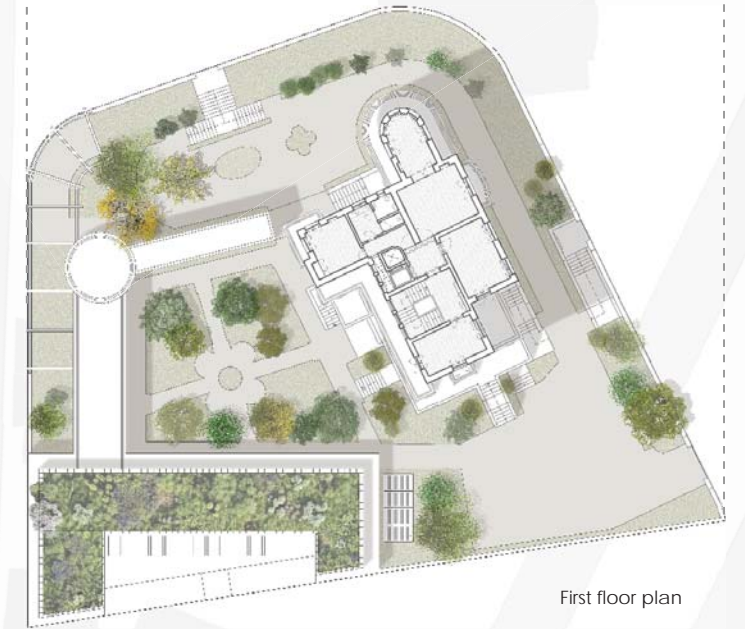


Ground floor plan



First floor plan

## MARECHAL 50

Photography by Irina Boersma

Similarly to the forties house, the extension building has three floors: one on the garden level, relating to it physically and visually, with an open-space program and a wide glazed façade. Its covering slab has a bold expression, floating over the reflective glass, with a perimetral white concrete sun shading topped with a natural zinc volume that provides a landscaped intensive garden roof. Similarly to the ground floor, floor -1 has a versatile open space program that allows the space to be transformed into a set of closed offices. Besides allowing public access from the street to the interior of the complex, this floor connects the "pavilion" extension to the existing house and the base-

ment parking lot on level -2. The parking lot has 14 parking spaces and direct access to both the new and old buildings.

This building has a white concrete structure and a glazed main façade with metal structure in the same brown colour of the window frames. The interior is characterized by a series of materials that contrast with the historical character of the old building: polycarbonate retro luminated walls, woven vinyl flooring and dark-brown metal finishings.



Longitudinal section