



26



27



28



29



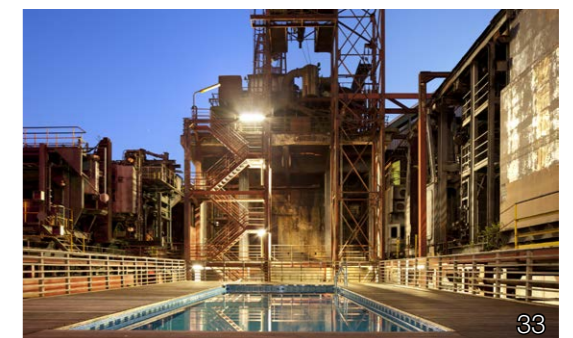
30



31



32



33

ween the clear, simple forms and structures of industrial architecture and the variety of spontaneous vegetation. The shape and outer appearance of Zollverein Park are being developed by a systematic and continuous „design by maintenance“.

With its status as UNESCO World Heritage site, Zollverein has a very high radiance and attraction for the city of Essen and the Ruhr region. In the foreground is the impressive industrial architecture of the mine plant. The open spaces have an unobtrusive look which creates a surface to take an appropriate effect on the architecture; they complement the ensemble to a formal framework that makes the dimensions of the site tangible and attract tourists and local residents equally. The visitor is invited to discover the park.

26, 27: Playground at northern part of coking plant © Claudia Dreyße, 2014
 28: Swing at the old team aisle © Claudia Dreyße, 2014
 29: Parkour at northern part of coking plant © Claudia Dreyße, 2018
 30, 31: Ringpromenade at northern part of coking plant © Claudia Dreyße, 2013
 32, 33: Swimming pool by artists Dirk Paschke and Daniel Milhonic at northern part of coking plant © Claudia Dreyße, 2014