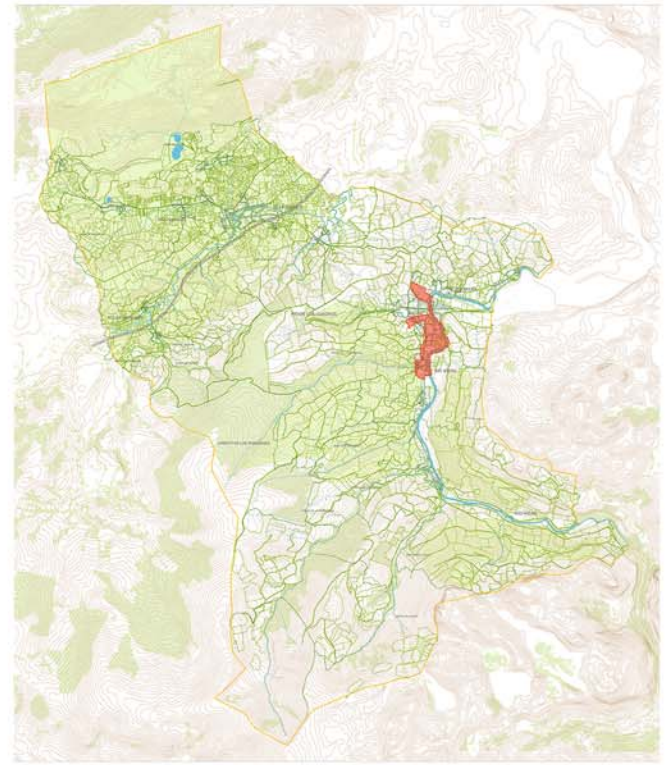
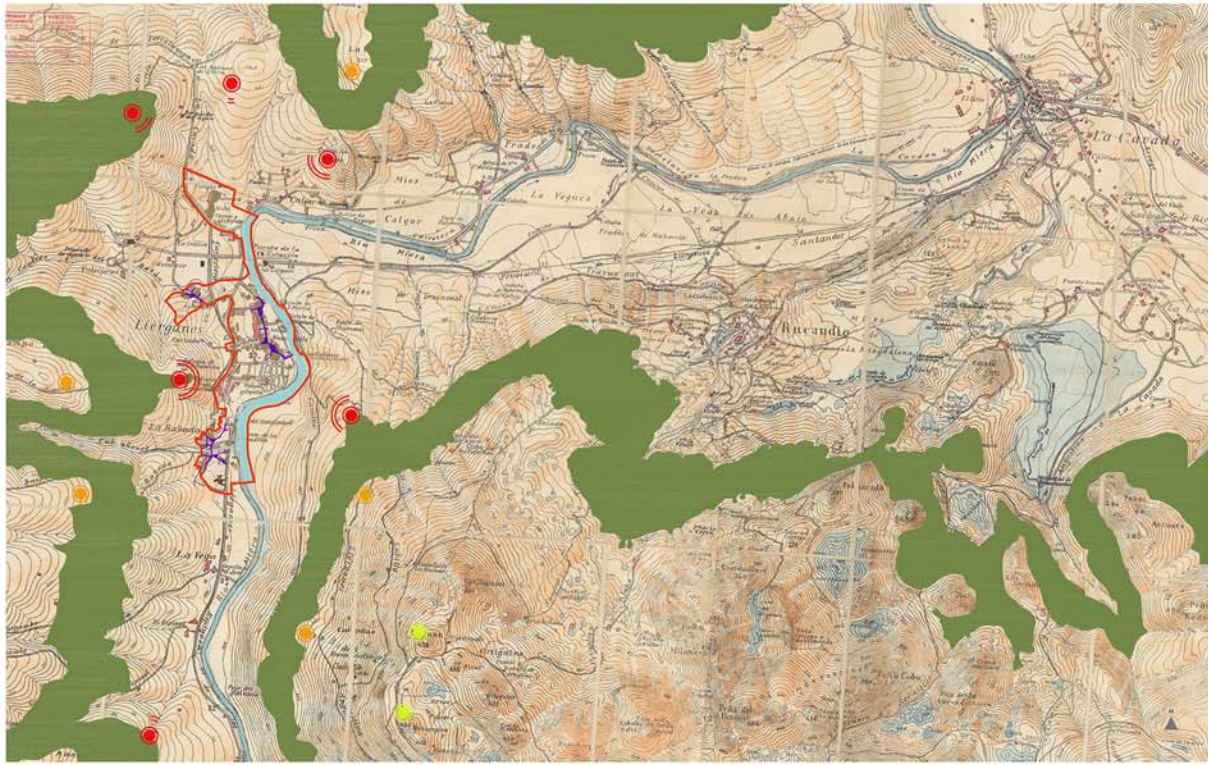


POPULATION DATA (2003)



MUNICIPALITY



HISTORICAL LANDSCAPE



Liérganes, Cantabria, a municipality of 36,7 km² and 2.500 inhabitants with a recognized historical complex that includes the districts of Mercadillo, La Rañada, La Costera and Ciudad Balnearia across the Miera river.

Constructions mainly from the seventeenth and eighteenth centuries with periodical transformations every hundred years. The medieval vestiges have disappeared, being replaced in the mentioned centuries. Important presence of "Indian" architecture (in Spanish "Indiano" is a term used for those who migrated to America and returned to Spain with wealth due to business).

Until the final approval of the "Plan especial" in 2017, it only had the "Catálogo de Protección de las Normas Subsidiarias" (Subsidiaries Norm Protection Catalogue), drafted thirty years ago and lacking a rigorous application by public authorities.

The team involved in this project has spent fourteen years of work and negotiation with four majors from different political parties until the Plan has entered into force.

The indispensable historical information of the floorspace and the study of the plots, existing buildability, type and age of constructions, public areas, urban and fluvial environment areas, landscape, and visual analysis will lead to the catalog of build types including various sections, buildability, ethnography, peculiar elements, parts from the arms industry, archeology, walls and locks.

VISUAL ANALYSIS ITINERARIES, SECTIONS AND SUB COMPLEXES



ANALYSIS . ELEVATIONS JUAN CURTIUS STREET