

REDEVELOPMENT OF BADAEVSKIY BREWERY SITE, MOSCOW, RUSSIA

HERZOG & DE MEURON

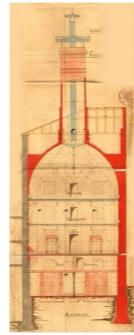
EUROPEAN AWARD FOR ARCHITECTURAL HERITAGE INTERVENTION, Category C - Urban planning



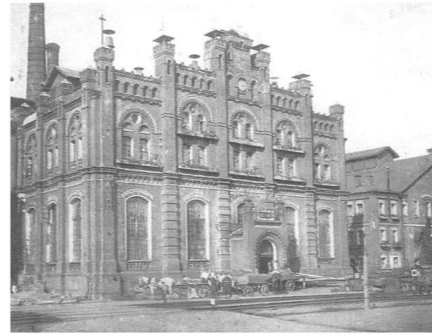
Existing conditions



Silos on west end of Building 3



Cupola section



Building 2 - 1880



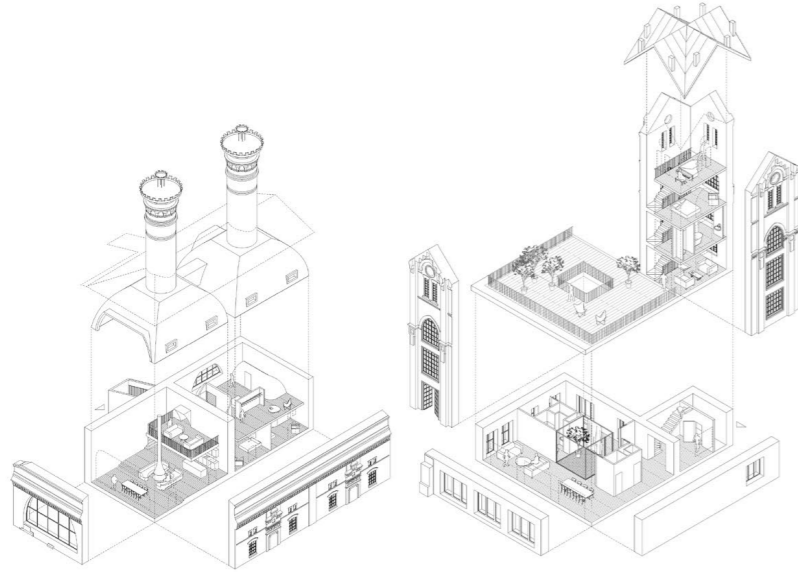
Remaining part of Building 2



South facade of Building 1 - Western part

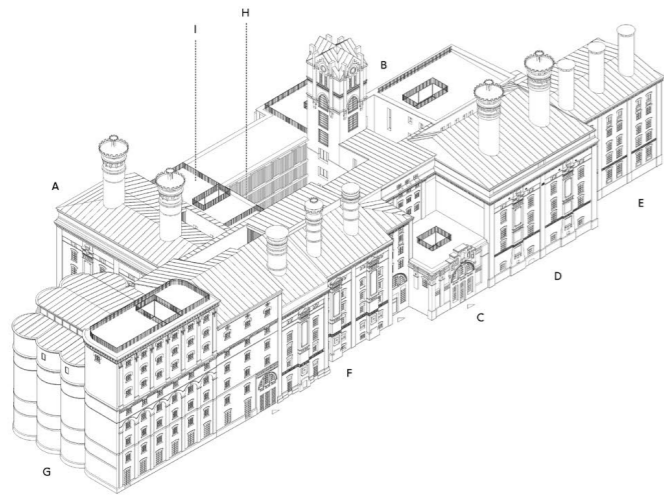


South facade of Building 1 - Eastern part

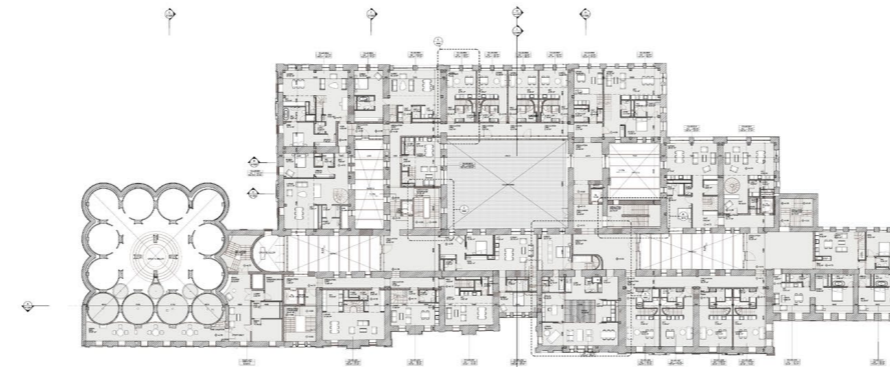


CUPOLA DUPLEX APARTMENT

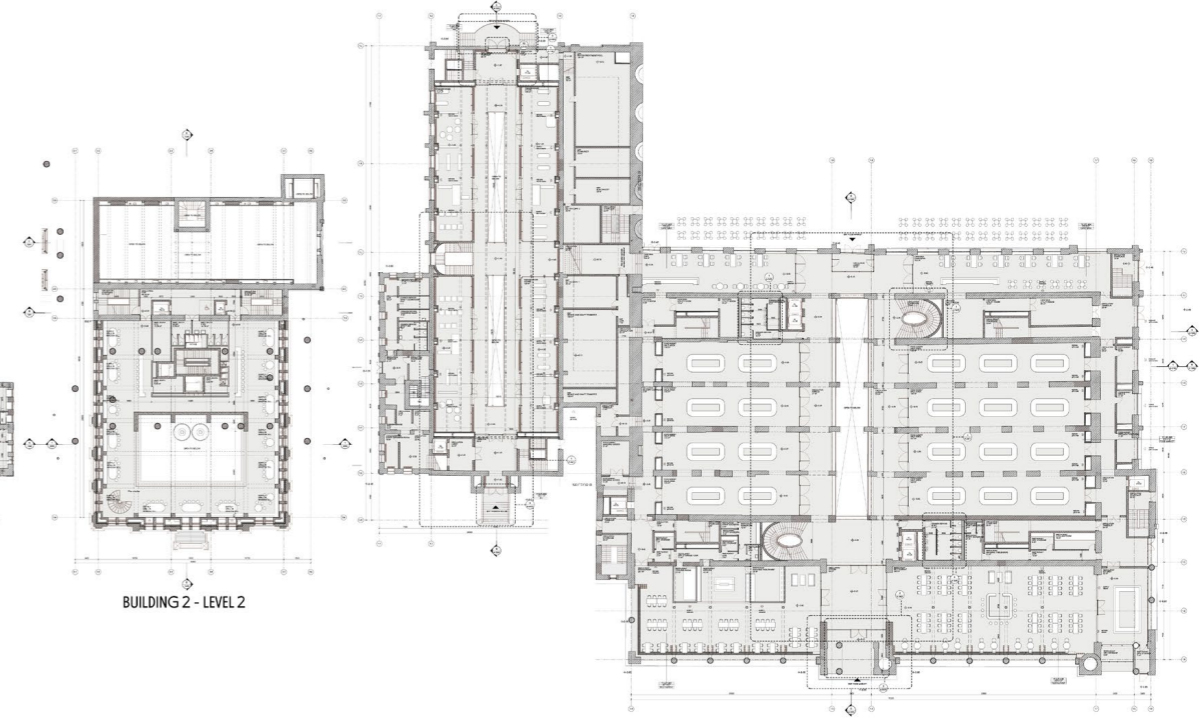
GOthic TOWER MULTI-STOREY APARTMENT



AXONOMETRIC VIEW OF BUILDING 3



BUILDING 3 - LEVEL 3



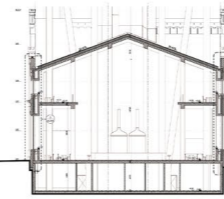
BUILDING 2 - LEVEL 2

BUILDING 1 - LEVEL 1

TYPICAL SECTION BUILDING 3



TYPICAL SECTION BUILDING 3



TYPICAL SECTION BUILDING 2



TYPICAL SECTION BUILDING 1



Building 1 will host a food market, fashion store, co-working space with a conference center, and a large gym.



Rear façade of Heritage Building 1 opens up to the park



The diverse functions of Building 1 are united by a central atrium and covered by a top-lit wooden roof, reconstructed to its original geometry.